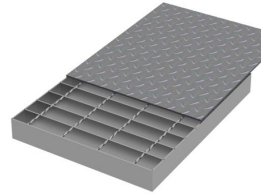




Compound Steel Grating Specification

When ordering, please specify:

1. Hole Shape
2. Bearing Bar Size (H x T)
3. Bear Bar Spacing (P)
4. Cross Rod Spacing (P1)
5. Panel Size (W X L)



Compound Steel Grating

Technical Parameter

	Bearing Bar Spacing	Cross Rod Spacing	Bearing Bar Size (width x thickness)												
			20 x 3	20 x 5	25 x 3	25 x 5	32 x 3	32 x 5	35 x 3	35 x 5	40 x 3	40 x 5	45 x 5	50 x 5	60 x 5
	mm	mm	Specification Code Nominal Weight (kg/m ²)												
20 mm	20	50	G203/20/50C 51.50	G205/20/50C 67.20	G253/20/50C 57.39	G255/20/50C 77.01	G323/20/50C 65.63	G325/20/50C 90.75	G353/20/50C 69.16	G355/20/50C 96.64	G403/20/50C 75.05	G405/20/50C 106.45	G455/20/50C 116.26	G555/20/50C 126.08	G655/20/50C 145.70
	20	100	G203/20/100C 49.30	G205/20/100C 65.00	G253/20/100C 55.19	G255/20/100C 74.81	G323/20/100C 63.43	G325/20/100C 88.55	G353/20/100C 66.96	G355/20/100C 94.44	G403/20/100C 72.85	G405/20/100C 104.25	G455/20/100C 114.06	G555/20/100C 123.88	G655/20/100C 143.50
30 mm	30	50	G203/30/50C 43.65	G205/30/50C 54.12	G253/30/50C 47.58	G255/30/50C 60.66	G323/30/50C 53.07	G325/30/50C 69.82	G353/30/50C 55.43	G355/30/50C 73.74	G403/30/50C 59.35	G405/30/50C 80.28	G455/30/50C 86.83	G505/30/50C 93.37	G605/30/50C 106.45
	30	100	G203/30/100C 41.45	G205/30/100C 51.92	G253/30/100C 45.38	G255/30/100C 58.46	G323/30/100C 50.87	G325/30/100C 67.62	G353/30/100C 53.23	G355/30/100C 71.54	G403/30/100C 57.15	G405/30/100C 78.08	G455/30/100C 84.63	G505/30/100C 91.17	G605/30/100C 104.25
40 mm	40	50	G203/40/50C 39.73	G205/40/50C 47.58	G253/40/50C 42.67	G255/40/50C 52.48	G323/40/50C 46.79	G325/40/50C 59.35	G353/40/50C 48.56	G355/40/50C 62.29	G403/40/50C 51.50	G405/40/50C 67.20	G455/40/50C 72.11	G505/40/50C 77.01	G605/40/50C 86.83
	40	100	G203/40/100C 37.53	G205/40/100C 45.38	G253/40/100C 40.47	G255/40/100C 50.28	G323/40/100C 44.59	G325/40/100C 57.15	G353/40/100C 46.36	G355/40/100C 60.09	G403/40/100C 49.30	G405/40/100C 65.00	G455/40/100C 69.91	G505/40/100C 74.81	G605/40/100C 84.63
60 mm	60	50	G203/60/50C 35.80	G205/60/50C 41.03	G253/60/50C 37.76	G255/60/50C 44.30	G323/60/50C 40.51	G325/60/50C 48.88	G353/60/50C 41.69	G355/60/50C 50.85	G403/60/50C 43.65	G405/60/50C 54.12	G455/60/50C 57.39	G505/60/50C 60.66	G605/60/50C 67.20