

B R O C H U R E

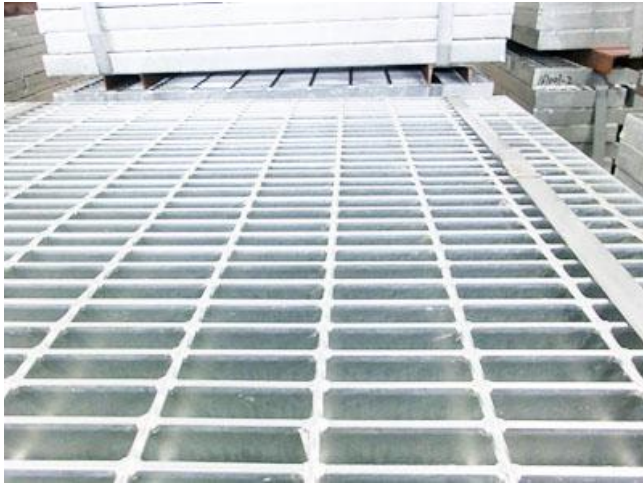


Metal Mesh Platform



Anping Web Wire Mesh Co.,Ltd.

Metal Mesh For Platform



Introduction

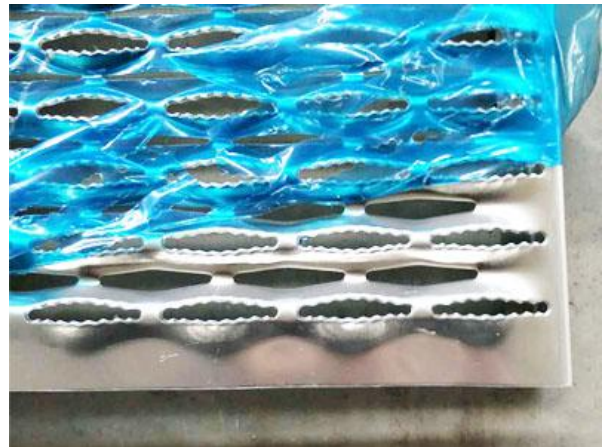
Metal mesh platform is also called 'hot dipped galvanized platform walkway'. It has a wide range application, such as general factories, workshops, mining, port and various kinds of platforms. Metal mesh platform has good features of beautiful appearance, easy installation. It belongs to a kind of modern architectural materials. It can add guard board by welding, diamond plate, mounting connection and other accessories.

Materials

Generally, material is Q235 low carbon steel. Common sizes are generally Q235, Q255, Q303, Q323, Q325, Q403, Q404, Q405 and other specifications.

Products

Pressure welded steel bar grating
Press-locked steel bar grating
Compound steel grating
Diamond shape safety grating



Idea for	Screen Size	Features & Benefits
<ul style="list-style-type: none">• Marine Industry• Industrial Platforms• Pedestrian Bridges• Shipping Docks• Stair & Accessways• Storage areas• Waterparks & Pools• Water and wastewater treatment plants	<ul style="list-style-type: none">• G205/15/50W• G253/20/100W• G325/30/50W• G203/20/50P• G255/20/100P• G323/30/50P• G405/30/100P• G253/40/100C	<ul style="list-style-type: none">• Lightweight• High strength• Slip-resistant walking surfaces• Prevent dirt deposition• Fast and easy installation• Long life span

Technical Parameters

When ordering, please specify:

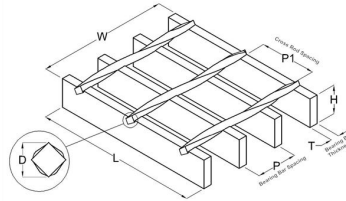
1. Types

Pressure welded steel grating,
press-locked steel bar grating,
Compound steel grating,
diamond shape safety grating

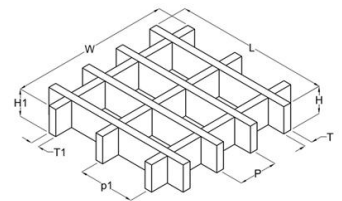
2. Hole Size

3. Panel Width (PW)

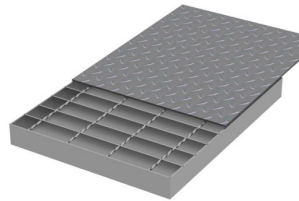
4. Panel Length (PL)



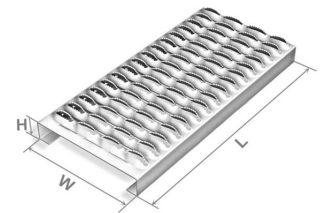
Pressure Welded Grating



Press-locked Steel Grating



Compound Steel Grating



Diamond Safety Grating

Steel Bar Grating

Specification Code	Bearing Bar Size	Bearing Bar Specing	Cross Rod Specing	Nominal Weight
type	mm	mm	%	Kgs/m ²
G205/15/50W	20 x 5	15	50	56.73
G253/20/100W	25 x 3	20	100	31.64
G325/30/50W	32 x 5	30	50	46.27
G203/20/50P	20 x 3	20	50	32.97
G255/20/100P	25 x 5	20	100	58.88
G323/30/50P	32 x 3	30	50	40.19
G405/30/100P	40 x 5	30	100	68.03
G253/40/100C	25 x 3	40	100	50.28

Headquarters

Web Wire Mesh Co.,Ltd.
No.12 Weier Rd.
EZD Industrial Park
Hebei, China
Tel: +86 0318 7568801
Fax: +86 0318 7568802
Website:www.webexpandedmetal.com

Branch

Web Wire Mesh Co.,Ltd.-SJZ
NO 2701 CYC
Shijiazhuang City
Hebei, China
Tel: +86 0311 89255081
E-mail: zhao@webwirecloth.com



Anping Web Wire Mesh Co.,Ltd.