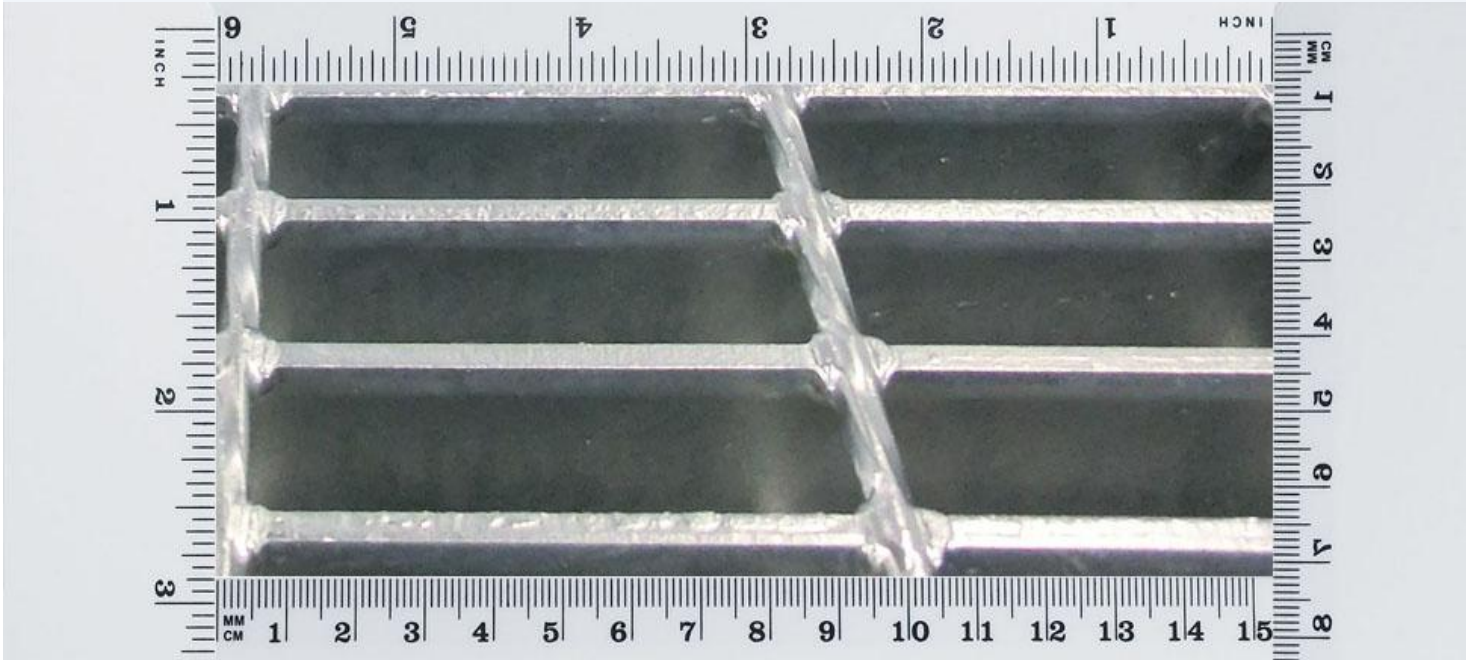




## G255/30/100W Pressure Welded Steel Grating



### Technical Parameter

Items	Imperial Standard		Metric System	
Bearing Bar Size	0.984	x 0.197 inch	25 x 5	mm
Bearing Bar Spacing	1.181	inch	30	mm
Cross Rod Spacing	3.937	inch	100	mm
Weight	7.10	lbs/sp.ft	34.91	kgs/sp.m
Material	Galvanized			