

Exterior Facade



Metal Mesh For Exterior Facade



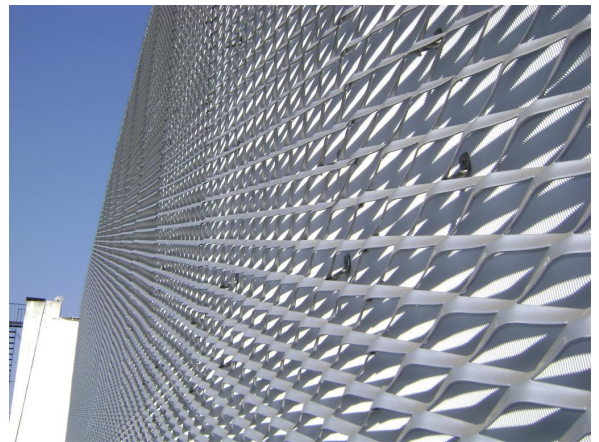
Introduction

Metal mesh is widely used for building exterior facade cladding in shopping place, working places and other public places, for its unique structure features, beautiful appearance and many fashionable elements. Metal mesh can be produced in various of materials including steel plate, aluminum plate, stainless steel plate and nickel plate. Not only pure metal plate, metal mesh are also added surface treatment to strengthen better properties, such as bright adnodized, black coated, polished and so on.

Using metal mesh in building facade cladding, it provides the following advantages.

Products

- Round hole perforated metal sheets
- Square hole perforated metal sheets
- Slotted hole perforated metal sheets
- Hexagonal hole perforated metal sheets
- Diamond hole expanded metal mesh
- Hexagonal hole expanded metal mesh
- Press-locked steel bar grating



Idea for	Screen Size	Features & Benefits
<ul style="list-style-type: none">• Car parkings• Shop malls• Hospitals• Public gardens• Apartment buildings	<ul style="list-style-type: none">• D 5mm• D 8mm• D 10mm• D 20mm	<ul style="list-style-type: none">• Metal mesh panels provides good air ventilation• Lighter weight, better corrosion resistance, more rigid and skid resistance in surface.• Minimize installation time and installation cost

Technical Parameters

When ordering, please specify:

1. Types

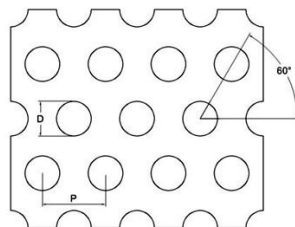
Round hole perforated metal, slotted hole perforated metal, diamond hole expanded metal, hexagonal hole expanded metal, steel bar grating

2. Hole Size

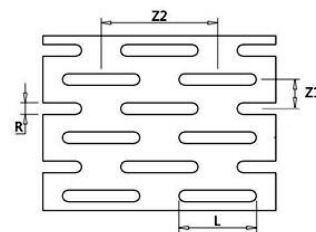
3. Thickness

4. Panel Width (PW)

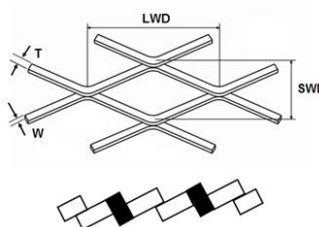
5. Panel Length (PL)



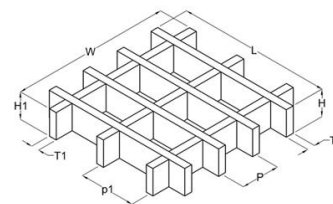
Round Hole Perforated



Slotted Hole Perforated



Diamond Hole Expanded



Press-locked Steel Grating

Perforated Metal Sheets

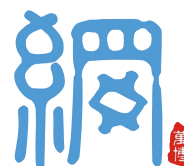
Shape	Hole Size	Pitch	Open Area	Thickness	Weight
type	mm	mm	%	mm	Kgs/m ²
60° Round hole	5.0	6.0	63.0	0.5	1.46
60° Round hole	6.0	8.0	51.0	0.8	3.08
60° Round hole	8.0	11.0	48.0	0.8	3.26
60° Round hole	10.0	14.0	46.3	1.0	4.22
60° Round hole	20.0	28.0	46.3	1.0	8.43
90° Round hole	10.0	15.0	34.9	1.0	5.11
Z type Slotted Hole	5 x 20	9 x 25	42.1	2.0	4.55

Headquarters

Web Wire Mesh Co.,Ltd.
No.12 Weier Rd.
EZD Industrial Park
Hebei, China
Tel: +86 0318 7568801
Fax: +86 0318 7568802
Website:www.webexpandedmetal.com

Branch

Web Wire Mesh Co.,Ltd.-SJZ
NO 2701 CYC
Shijiazhuang City
Hebei, China
Tel: +86 0311 89255081
E-mail: zhao@webwirecloth.com



Anping Web Wire Mesh Co.,Ltd.