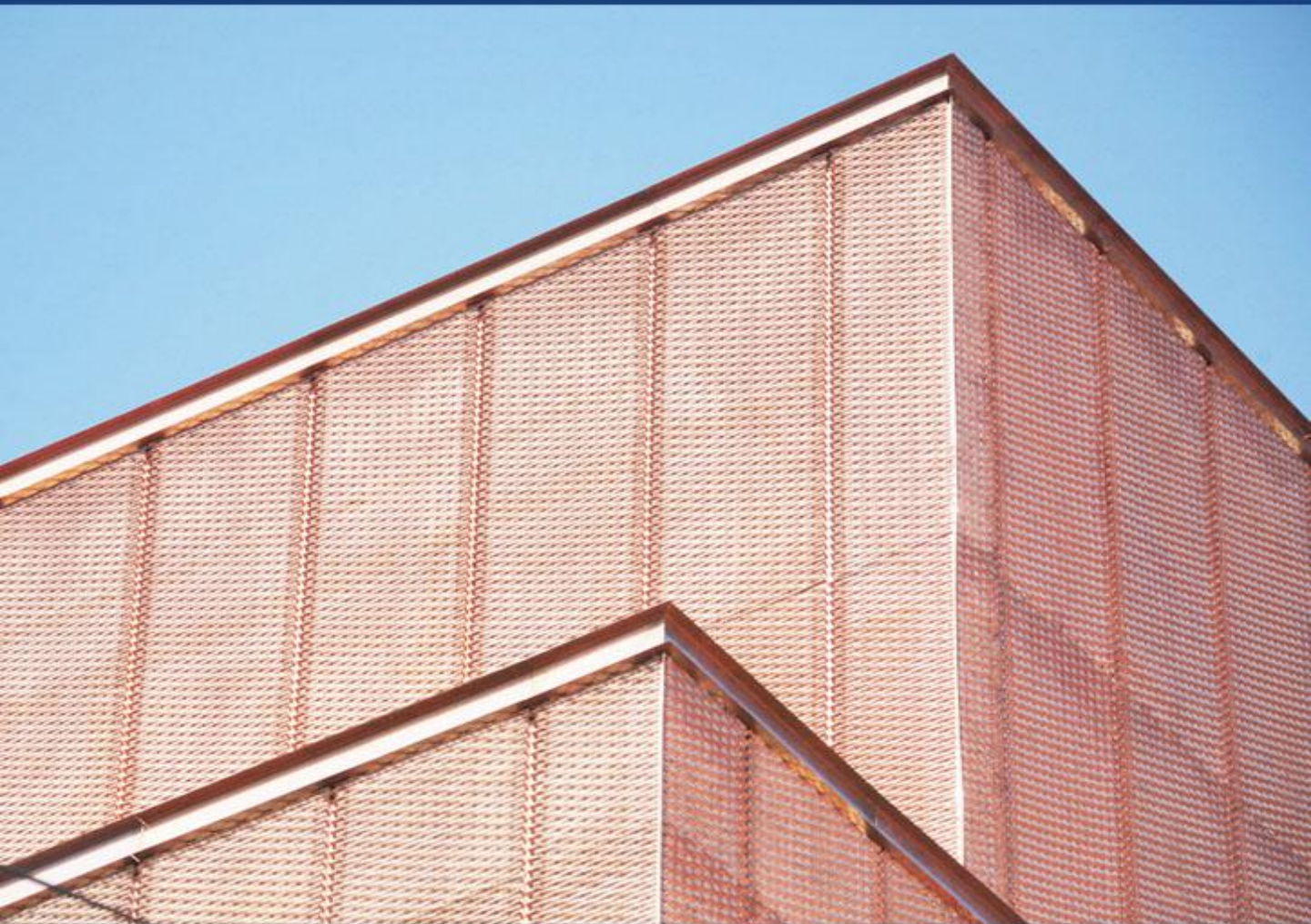


B R O C H U R E

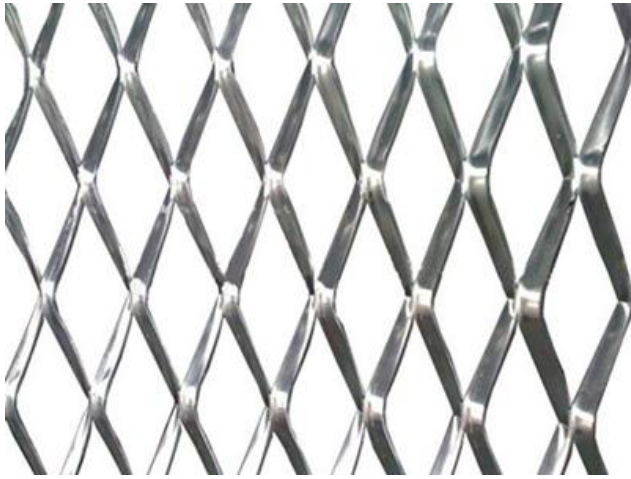


EMI & RFI Shielding



Anping Web Wire Mesh Co.,Ltd.

Expanded Metal Mesh For Shielding



Introduction

With the popularization of diverse types of electronic equipment, the importance of the problem of the electromagnetic environment has come to be widely recognized, and various studies aimed at satisfying the requirements of a good electromagnetic environment have been carried out. In order to protect the integrity of your electronic devices from the damaging effects of electromagnetic interference or radio frequency waves,

it is important to use EMI/RFI shielding products. We have been developing expanded metal products for the shielding industry applications.

Formed from sheet metal, the shape, pattern and open areas are engineered to match the needs of your particular application. Many different metals can be custom expanded to shield against specific wavelength spectrum's. The shielding material we can produce is stainless steel, steel .copper, nickel etc. They can be laminated, coated and sometimes plated.



Idea for	Screen Size	Features & Benefits
<ul style="list-style-type: none">• Telecommunications systems• Computers• Medical electronics• Gaskets• Aerospace and avionics applications• Industrial controls	<ul style="list-style-type: none">• LWD x SWD 8 x 5 mm• LWD x SWD 10 x 5 mm• LWD x SWD 12 x 6 mm• LWD x SWD 15 x 8 mm	<ul style="list-style-type: none">• EMI/RFI shielding• Light weight• Easy to Maintain

Technical Parameters

When ordering, please specify:

1. Shape

Diamond hole

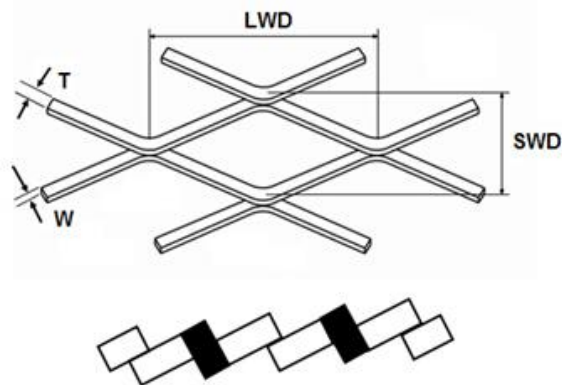
2. Hole Size (LWD x SWD)

3. Strand (W)

4. Thickness (T)

5. Panel Width (PW)

6. Panel Length (PL)



Standard Type Expanded Metal

Expanded Metal Mesh

Hole Size LWD x SWD		Strand D		Thickness	Weight
mm	inch	mm	inch	mm	Kgs/m ²
8 x 5	0.315 x 0.197	0.5	0.020	0.5	0.79
8 x 5	0.315 x 0.197	1.0	0.039	0.5	1.57
10 x 5	0.394 x 0.197	0.5	0.020	0.6	0.94
10 x 5	0.394 x 0.197	1.0	0.039	0.6	1.88
12 x 6	0.472 x 0.236	0.5	0.020	0.6	0.79
12 x 6	0.472 x 0.236	1.0	0.039	0.6	1.57
15 x 8	0.591 x 0.315	1.0	0.039	1.0	1.96

Headquarters

Web Wire Mesh Co.,Ltd.
 No.12 Weier Rd.
 EZD Industrial Park
 Hebei, China
 Tel: +86 0318 7568801
 Fax: +86 0318 7568802
 Website:www.webexpandedmetal.com

Branch

Web Wire Mesh Co.,Ltd.-SJZ
 NO 2701 CYC
 Shijiazhuang City
 Hebei, China
 Tel: +86 0311 89255081
 E-mail: zhao@webwirecloth.com



Anping Web Wire Mesh Co.,Ltd.